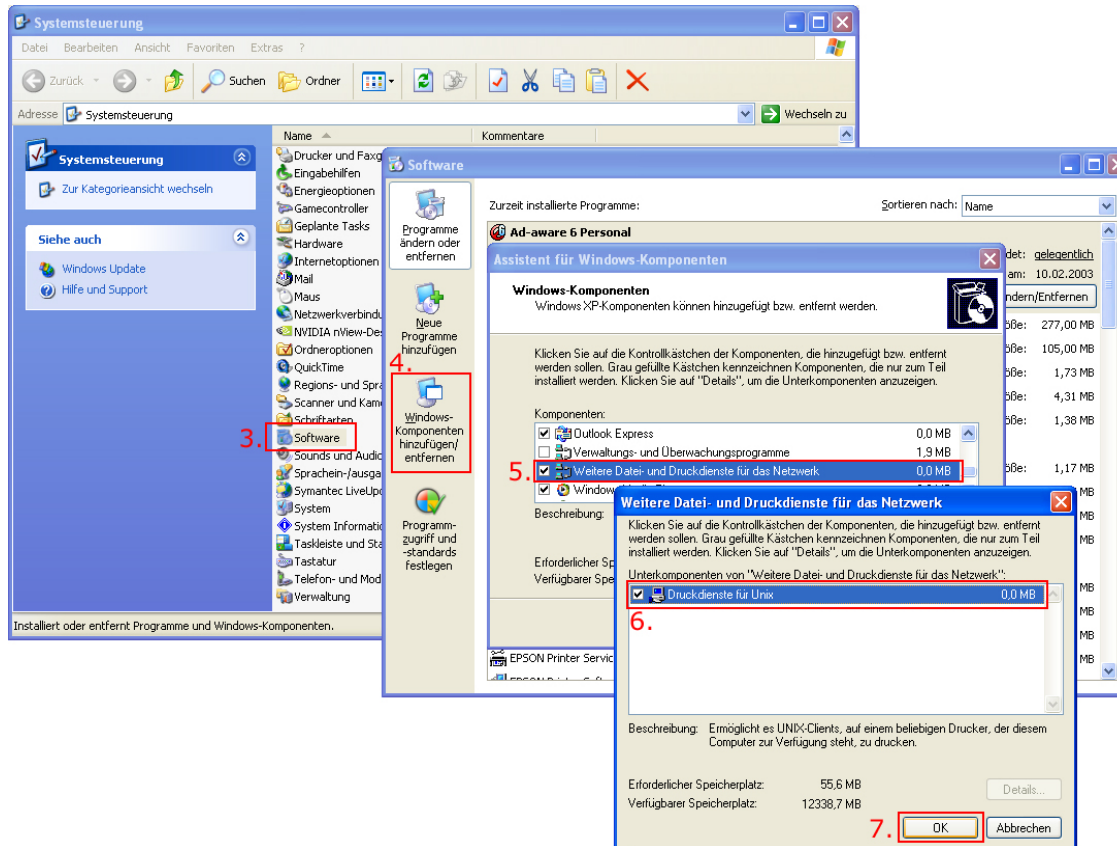


ColorGATE virtual printer under Mac OS X

This document describes how to use **ColorGATE** virtual printer with the operating system Mac OS X by Apple.



Fig. 1

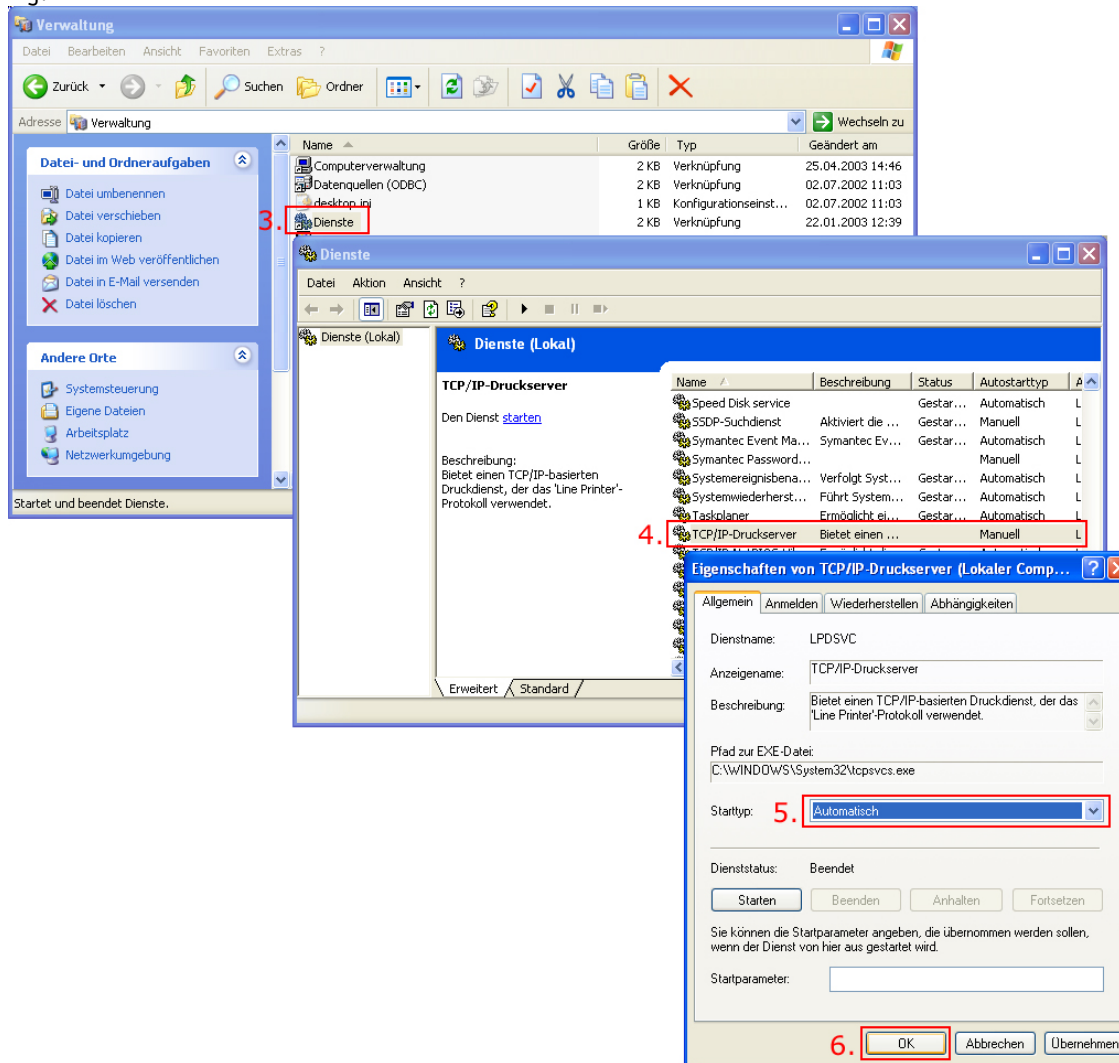


First of all add the “TCP/IP print server” service on the Windows 2000/2003/XP PC where your **ColorGATE** software is installed: (Fig. 1)

1. Log in with Administrative authorization.
2. Click **Start > Settings > Control Panel**.
3. Double-click **Add – remove Programs**.
4. Click the **Add-remove Windows Components** button.
5. Check the **Other network File and Printer Services** section and click on **Details**.
6. Put a checkmark at **Print Services for Unix**.
7. Click **OK**, Click **Next**.
(The computer will probably ask for a Windows installation disk)
8. Insert the Disk and the installation will run automatically.
9. Click **Finish**.
10. Close the **Add-remove Programs** window.

ColorGATE virtual printer using Mac OS X

Fig. 2

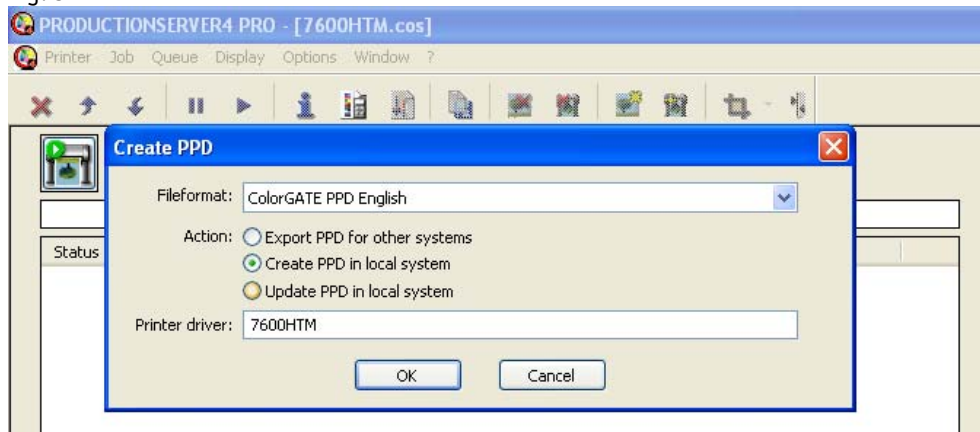


For a automatically start of the service: (Fig. 2)

1. Click **Start > Settings > Control Panel**.
2. Double-click **Administrative Tools**.
3. Double-click **Services**.
4. Double-click **TCP/IP Print Server**.
5. Change the **Startup Type** to **Automatic**.
6. Click **OK** and close the open windows.

ColorGATE virtual printer using Mac OS X

Fig. 3



Steps in ColorGATE Products of Version 4

Conditions: You have created a printer definition e.g. for the Epson Stylus Printer Pro 7600 HTM. If you want to print from another application to your ColorGATE product, generate a PPD in the local system and create a virtual printer afterwards:

Create a PPD in your local System: (Fig. 3)

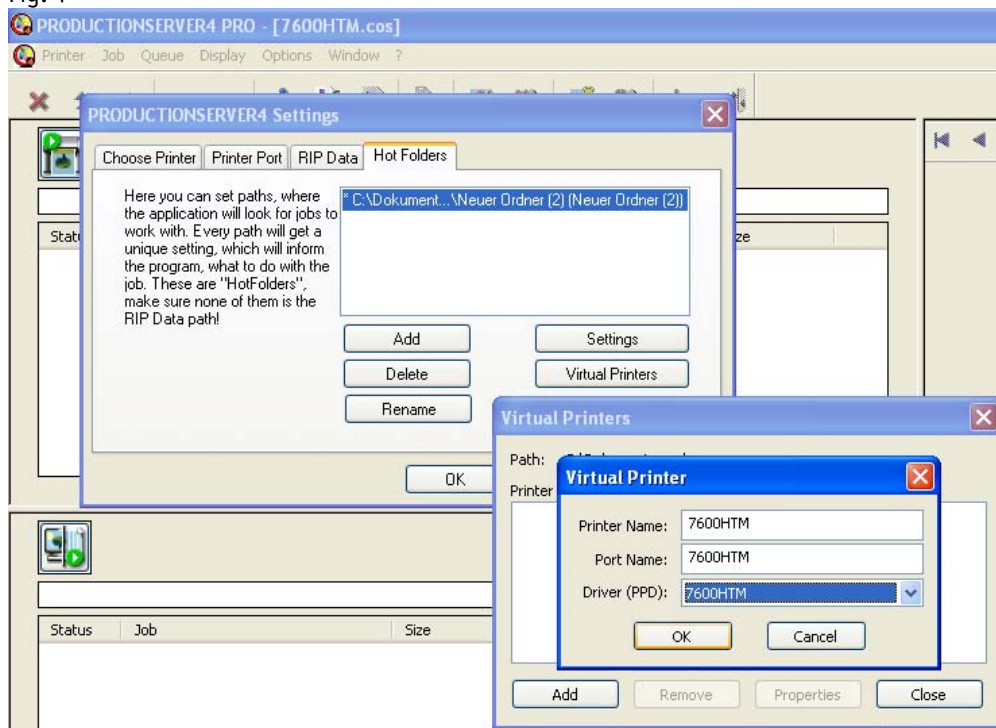
1. Click on **Printer > create PPD.**
2. Check Option **create PPD in local System.**
3. Give it a name it and note the name down.
4. Apply with **OK.**

Create a virtual Printer: (Fig. 4)

1. Click on **Printer > Settings.**
2. Click on Tab **Hot Folders.**
3. Mark the defined Hot Folder path.
4. Click on **Virtual Printers.**
5. In the new Window click on **Add.**
6. Define a **Printer Name** (equal to the PPD created before) and set **Port Name** the same value.
7. Choose the created PPD as **Driver (PPD)** from the list.
8. Apply the settings with **OK.**
9. The Virtual Printer will appear in the List, click on **Close**, and on **OK** in the next window.

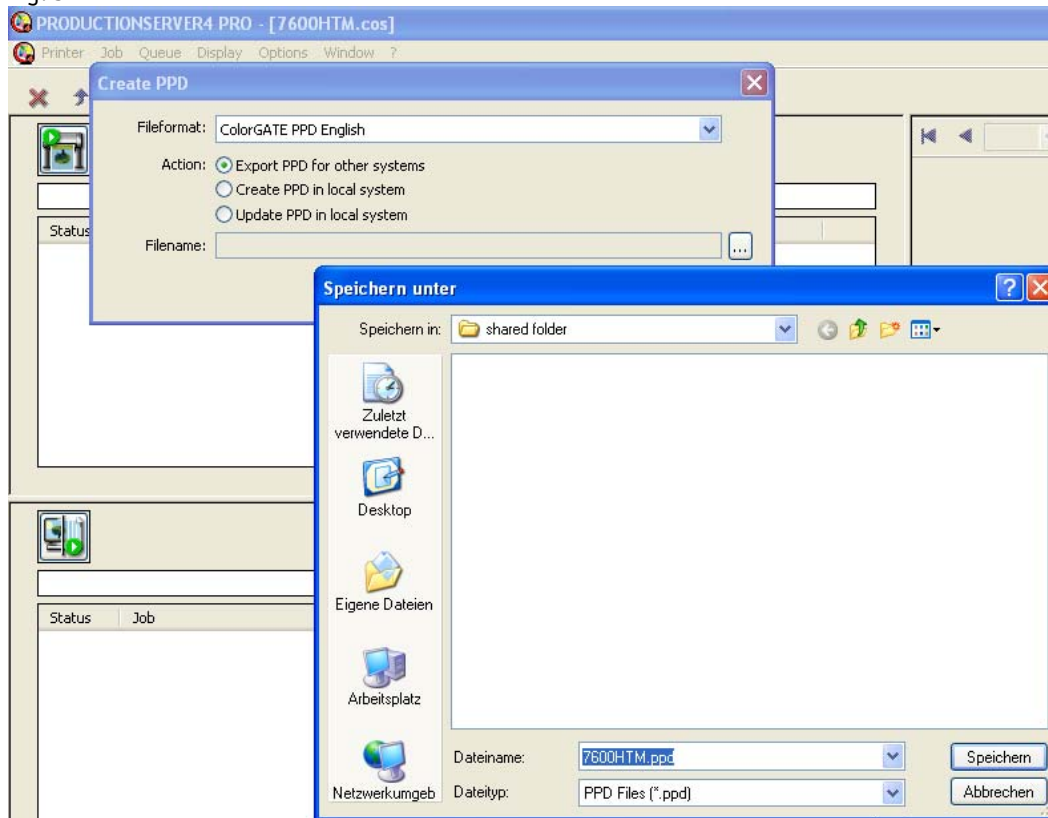
Check in Windows under **Start > Settings > Printers** if the printer you've just created is listed there and on status shared.

Fig. 4



ColorGATE virtual printer using Mac OS X

Fig. 5



If you wish to print to your **ColorGATE** product from another Computer and System (e.g. Macintosh or Linux) through another application, export a PPD from your Computer where **ColorGATE** software is installed. Continuing add a virtual printer on your Mac using this PPD.

Export a PPD for another System: (Fig. 5)

1. Click on **Printer > create PPD**.
2. Click on Option **export PPD for other systems**.
3. After a Click on the Button ... right beside **Filename** a new window will open.
4. Specify the PPD with the same name as the shared printer and save it in a folder shared in the network accessible over your Mac computer.
5. In Window **create PPD** apply with **OK**.

ColorGATE virtual printer using Mac OS X

Fig. 6

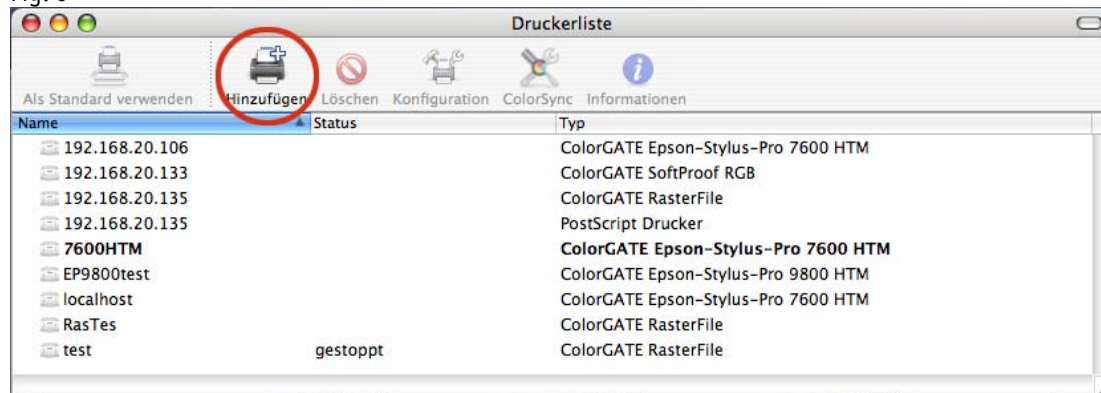
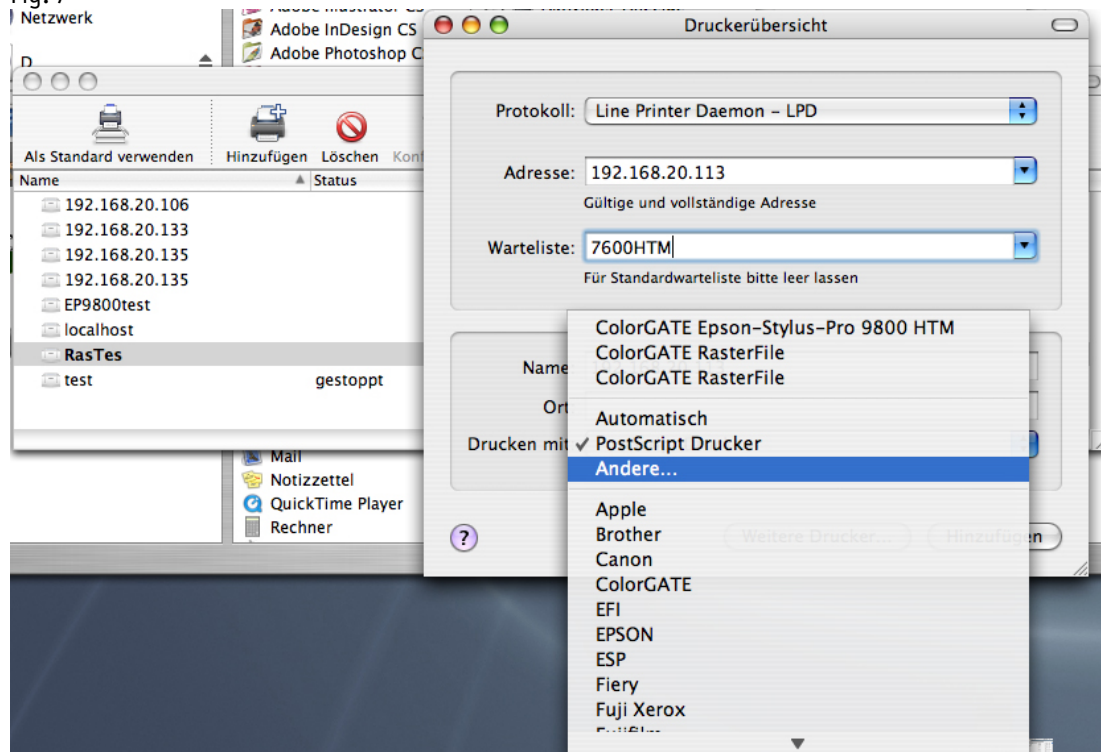


Fig. 7



Steps under MAC OS X

Adding a virtual printer: (Fig. 6 and Fig. 7)

1. Copy the PPD created on your Windows computer into the following directory:
Macintosh HD/ Library/ Printers/ PPDs/ Contents/ Resources/ en.lproj
The new installed PPD is recognized by the system automatically and does not require a reboot.
2. Now start the **Print Center** and click on **Add printer.** (Fig. 6)
3. Set up a TCP/IP printer and choose **LPD** for the **protocol.** (Fig. 7).
4. As **Address** enter the **IP Address of your Windows computer.** (You can determine your IP Address by starting **Start > Run > cmd** and entering **ipconfig**).
5. Enter the **name of the printer** in the **Queue Name** field (like in the Windows part).
6. In the pulldown menu **Printer Model** choose **Other** and navigate to:
Macintosh HD/ Library/ Printers/ PPDs/ Contents/ Resources/ en.lproj / 7600HTM.ppd
7. Apply the settings and close all windows.

The Printer is now installed and can be used with every application.

Please assure that the Windows Firewall is deactivated, otherwise problems can occur.

Last Update: ST 2006/08